



Clatterbridge
Cancer
Centre - Liverpool



Clatterbridge
Cancer Charity

Fundraising
Guide



Clatterbridge
Cancer Charity



Welcome to the team!

Thank you for supporting Clatterbridge Cancer Charity, together we can transform cancer care in our region for generations to come

Thank you for choosing to fundraise for Clatterbridge Cancer Charity. You have joined thousands of other supporters who are doing their bit to help those who need us the most in our region.

[Did you know The Clatterbridge Cancer Centre is one of the largest networked cancer centres in the UK?](#)

From 18 hospitals across Merseyside and Cheshire, we host over 240,000 patient appointments every year; offering pioneering chemotherapy, radiotherapy and proton therapy treatments.

Your fundraising enabled us to open Liverpool's first cancer hospital on the 27 June 2020, so however you are supporting us, hopefully you will find lots of helpful hints in this guide to help you along the way.

Don't forget that we're here to help you every step of the way, so if you have any questions about your fundraising please get in touch.

We are here to help you, to help Clatterbridge Cancer Charity!

We wish you the very best of luck!

Charity Team

©Clatterbridge Cancer Charity is a registered charity in England and Wales, No. 1202412 and a company limited by guarantee, No. 14732055.

[Connect with us on social media](#)



@clatterbridgeCC



@clatterbridgeCC



@clatterbridgecc



Clatterbridge Cancer Charity



Your JustGiving Page

Ready to start fundraising?
It's super simple to set up your JustGiving page!

Follow our 3 simple steps and you'll soon be ready to start fundraising!

1. Visit <https://www.justgiving.com/campaign/ccc-events>
2. Click on Start Fundraising to set up your JustGiving account and your page.
3. Click on 'Taking Part in an Event' and then simply search for your event at the top of the page. If you can't find your event, simply scroll to the bottom of the page and select 'Add your own', and you can add in all of the details of your chosen event.
4. Click on 'Create your Page' and that's it! You've just set up your JustGiving page!

From here you can edit your page as much, or as little as you like. Adding photos, videos and even a story about why you're supporting us can really help boost your fundraising.

Together, we can transform cancer care

Before you start asking for donations, use the check-list below to help set you up as a fundraising phenomenon!

Decide what you're doing

Take a look at the JustGiving Fundraising A-Z, or get in touch with our Events Team for lots of inspiration!

Don't forget to Gift Aid

It's no cost to you and essential funding for us. By adding Gift Aid to your donations, every £1 you sponsor or donate can be worth £1.25 to us.

Spread the word

Share your fundraising event(s) on social media, email your work colleagues and invite your family and friends.

Pay in your donations

After the fun and the frolics are over, head to clatterbridgecc.nhs.uk to pay in your donations.

If you prefer to pay cash donations in, you can visit one of our Charity Offices or request a Paying-In Slip.

Decorate your event

Make sure your event(s) look fun and inviting, and download our Bunting or Paper Chains to make your event(s) really pop!

Feel Proud

However you've chosen to fundraise for us, you have helped us to transform cancer care.

Fancy Dress

Kit yourself out in Clatterbridge clobber and get ready to look the part!

Order your Clatterbridge t-shirts from our online shop, and take a look at some of our other fantastic merchandise.

When you've finished your fundraising give our Charity Team a call on 0151 556 5566 and order your Certificate and we can email it to you to share on your social media or we can post a printed copy to you.

Set up your contactless collection

Make your fundraising easy and accessible for everyone.

Get in touch with our Charity Team to request your Collection Tins, or Buckets or download and print our Cashless Collection Poster.





Support us by fundraising

Did you know that 1 in 2 people in our region are affected by cancer?

It's a staggering number, but when you do your own fundraising for Clatterbridge Cancer Charity, you will be making a real difference to people with cancer.

Raising money for Clatterbridge Cancer Charity, brings people together to achieve something really special. Whether you're organising a raffle at work, holding a quiz night or hosting a bake sale, our team is here to support you every step of the way as you fundraise for your local cancer charity.

Take a look at just some of the fantastic ways you can support us by visiting clatterbridgecharity.org/support-us/

Fundraising A to Z

Our fundraising A to Z is packed full of innovative and creative ideas to inspire you to try something different to raise money

Hold an afternoon tea (or a coffee morning) and raise funds for Clatterbridge Cancer Charity in return for some delightful delicacies!

You could even have a Bake Off element, with prizes for the best bakes.



A

If you've got a special birthday coming up, why not ask for donations to Clatterbridge Cancer Charity instead of gifts?

Whether you write it on your party invites, or you set up a birthday fundraiser on Facebook it's a great way of supporting cancer patients throughout our region.



B

Grab your bike and get ready to ride!

Challenge yourself and Cycle in your local area, or even further afield and ask for sponsorship to help support Clatterbridge Cancer Charity.

You could even partner with your local gym, and complete a static cycle challenge!



C

We're a nation of dog lovers, and what better way to support Clatterbridge Cancer Charity than hosting your very own Dog Show.

It could be virtual, or in-person, but you could offer prizes and rosettes for Waggiest Tail, Prettiest Eyes and even Dog most like its Owner there's lots of fun to be had!



D

Exercise isn't just great for releasing endorphins - it's a great way of fundraising too!

Whether you aim for 100 squats in a week, or 100,000 steps in a month get your team together and get your family and friends to sponsor you to see how long you can keep it up.

If you don't currently exercise then it's a great opportunity to start!



E

Great if you're looking to get your workplace involved, organise a five-a-side Football Tournament and ask spectators to donate to come and watch you and cheer you on.

You could also make a day of it by organising food and entertainment, and have a raffle* to boost your donations.

Come rain or shine, it'll be a fantastic day of fundraising and lots of fun for everyone!



F

*Check out our helpful guidance on how to organise your raffle in your Fundraising Guide, or get in touch by calling 0151 556 5566 and we can advise you on how to set up your raffle so that it is safe, legitimate and legal.

Get ready to game on, and host a gaming or a streaming marathon for Clatterbridge Cancer Charity.

If you or someone you know plays a lot of FIFA, Minecraft or Mario Kart then why not set up a 12-hour gaming marathon to raise funds for cancer patients across the region.

If online gaming isn't your thing then why not host a board games evening, and make a donation in lieu of what you'd have spent on a night out?

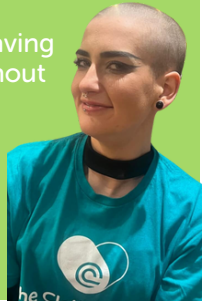


G

Will you brave the shave?

Headshaves are a simple, but fantastic way of fundraising for Clatterbridge Cancer Charity.

Get rid of those locks and make a life-saving difference local cancer patients throughout Merseyside, Cheshire and beyond.



H

Get your teams together, and go head-to-head in an Interdepartmental sports day!

Think three-legged race, wheelbarrow races and tug of war; its the perfect fundraiser for schools, offices and more and you can ask for sponsorship for the team you think will win.

Will you go for gold for Clatterbridge Cancer Charity?



I

One man's trash is another man's treasure, and if decluttering your home has been on your job list for a while, why not host a Jumble Sale and ask for donations to Clatterbridge Cancer Charity?

Whether it's bric-a-brac, clothes or toys it's a great way of reusing unwanted goods whilst helping to support even more people who are living with cancer.



J

Kick the habit, and give up something for a month to help fundraise for Clatterbridge Cancer Charity.

Can you take the stairs but always end up using the lift? Do you reach for fizzy drinks instead of water?

Whatever it is you decide to give up, it's a simple fundraising activity that everyone can get involved in.



K

Gather your girlfriends, your sisters, your mums and aunties - even your grans and host a Ladies Lunch for Clatterbridge Cancer Charity.

An ambitious event, but one you won't forget there's so much you can do to make a real difference to cancer patients throughout the region.

Why not partner up with a small clothing boutique, and include a fashion show, or a local winery and incorporate a cheese and wine tasting?



L

Put the fun in fundraising, and host a Mulled Wine and Mince Pies event for Clatterbridge Cancer Charity over the festive season.

Your supporters will be feeling merry and bright, and full of Christmas cheer from the moment they hear the classics. It's a great way of fundraising, but also a wonderful way to bring together your local community.

If you need any extra resources like collection buckets or bunting, just give our Charity Team a call.



M

Non-Uniform days are one of the easiest fundraisers you can organise. Whether you're at school or work, everyone can join in.

Think Christmas jumpers for the festive season, or get involved in our Let's Go Green campaign and get your team or school to wear green outfits and accessories for Clatterbridge Cancer Charity.



N

Join forces as a team and challenge yourselves in an Office Olympics!

Think outside the box and have some really unusual categories such as desk chair races, rubber-band archery or even relay tic-tac-toe. Donations can be made from sponsorship, or from entry in to different categories, and you could even have a prize for best (or worst!) dressed - depending on how competitive you are!

O



Payroll Giving is a hugely successful corporate initiative across the world and is a great way for your employees to support your partner charity.

Every month your employees can opt to give a discretionary amount to us through their payroll and this is a pre-tax contribution.

Payroll Giving is super easy to setup. Just ask your Payroll department or Benefits / CSR Team directly for how to get started, and with your support we can help even more people living with cancer throughout the region.

P



Quiz Nights are a fun, fast-paced fundraiser that can make a huge difference to cancer patients and their families.

Online, or in-person the possibilities are endless; will you have themed rounds or will you think outside the box and have a 'Musical Bingo' round to add to the competition?

If you're hosting a Quiz Night in your local pub, or village hall then get in touch with our Charity team and we can support you with extra resources such as bunting, balloons, t-shirts and more!

Q



If a five-a-side football match isn't your thing, why not organise a Rugby tournament instead?

You could still have food, drinks and entertainment but you could include a Haka competition to see who can perform the best dance or challenge!

If you're hosting in the summer, you could even have a BBQ and ask for a donation for food and drinks provided at the event.

R



How long can you go without talking?

A Sponsored Silence is a great way of fundraising - and it can be a real challenge if you're a chatterbox!

Test yourself, and see if you can go without talking for a week and you'll soon be getting donations, which will help us to continue to support even more people living with cancer.

S



It's a piece of cake to host your own Tea Party, host your own and raise some much-needed dough!

What better way to enjoy those long summer days than getting together with friends and family to enjoy a cuppa and a slice of cake in support of Clatterbridge.

Anybody can take part: whether it's a tea party with your nearest and dearest, cake and coffee with your neighbours, or a beige buffet at work, it's a great excuse to raise money while enjoying some tasty treats!

T



Calling all university societies and groups - this is your time to shine!

University Challenge has been running since the late 1950s and is still hugely popular today. If you and your society think you've got what it takes, why not host your own University Challenge in your student union, and compete against another society or another university altogether?

Ask for a donation for team-mates to enter, and you can even throw an after-party to celebrate your victory with lots of additional fundraising boosts!

U



Vintage and pre-loved is taking the world by storm, so why not host a vintage or pre-loved clothing sale from home, or from your local community centre?

You can add a vintage afternoon tea on to your event to boost your donations, or you could go all out and have vintage themed entertainment whilst your local community has a good rummage!

Not only will you get some gorgeous new clothes and accessories, but you can ask for donations for the items you sell and you'll be helping to support even more people living with cancer.

V



Looking to do something a little different?

Why not host a wine and cheese evening* at home with family and friends?

It's a great way of getting together with your nearest and dearest, whilst also getting the chance to taste some beautiful cabernets and sauvignons.

Charge a fee for everyone joining you, host a raffle or a tombola and throw in some party games for good measure and you'll soon be a fundraising phenomenon!

*over 18s only

W



If you work in a school and you're having a Christmas Fair ask your pupils to get involved by creating Xmas Hampers, which you can use as raffle prizes?

You could have food hampers, drinks hampers or a festive goodies hamper, which has everything you'll need to kick-start Christmas.

Or, you could ask your Food Technology pupils to bake some festive goodies to include in the hampers - everyone loves homemade goods at Christmas and it's a great way of getting your pupils to boost their skills as well as their donations to Clatterbridge Cancer Charity!

X



Could you say yes for a day?

Host a 'Yes Day', and ask for £1 from everyone who asks you to do something.

It could be as simple as 'will you help me with me homework' or you could throw a few silly suggestions in to make it more of a challenge!

Get your boss, your friends, your family and even your neighbours to get involved - it's a lot of fun, and you'll be helping to raise money to support people living with cancer across the region.

Y



Sign up to complete a Team Building day with a difference!

If you're a bit of an adrenaline-junkie, why not get your work colleagues involved in a Zipline Challenge.

It's a fun and thrilling activity - and a great way to get everyone in the office involved!

There are lots of venues across the UK, which offer Ziplines for charity and once you're signed up, we can help you with everything from t-shirts to support with boosting your donations and promoting your activity on our social media channels.

Z



Boost your Fundraising!

Your fundraising journey starts here, so boost your online donations with our handy recommendations to kick-start your donations.



An engaging story can make all the difference, but if you're not sure what to say think about the following to make your story stand out:

- Why are you fundraising?
- Why are you supporting Clatterbridge Cancer Charity?
- What will you do to fundraise for the Charity?
- How will the donations you receive help?

Before you know it, your story will be ready to share.



Have a think about what you think you could achieve and don't forget to add an update when you've hit a fundraising milestone!

If you're taking on a challenge which has a set number of miles to complete, why not reflect this in your target?

So if you're completing a 10,000 step challenge, you could aim for £100 as a starter and then increase your target once your donations are on a roll.



Lights, camera action!

While photos are meaningful, your supporters may connect with your story at an even deeper level if you record a simple, heartfelt video on your phone and share it with your JustGiving link.

Don't forget you can add it on to your JustGiving page as an update, so if anyone missed it on social media they'll be able to watch it from your fundraising page.



Team work makes the dream work, and there is strength in numbers.

Whether you're completing an event, or you're taking on a challenge - set up a team page on JustGiving and let the competition begin!

You could offer a prize for the highest donation, or highest overall fundraising amount but your team will not only get a big morale boost, but you'll all be contributing towards helping Clatterbridge Cancer Charity support even more people living with cancer.

Karl's Story

"I already work for the Clatterbridge Cancer Centre Trust as a Diagnostic Radiographer and have seen the hugely important work that goes into supporting thousands of patients experiencing their cancer journey"

How INCREDIBLE is The Clatterbridge Cancer Centre's very own Diagnostic Radiographer, Karl Bunnell, who will be taking on all 214 Wainwright Peaks of the Lake District over a 3 month period, all in support of Clatterbridge Cancer Charity!

"This includes 36,000m of ascent (7000m more than the height of Everest) and approximately 525km of hiking. It's gonna hurt but I simply can't wait to get started!

I choose to do this for 2 reasons; firstly not only do I already work for The Clatterbridge Cancer Centre and have seen the hugely important work that goes into supporting thousands of patients experiencing their cancer journey, but in December 2020 I lost my mother suddenly and I received outstanding support from the Trust throughout one of the most difficult times of mine and my family's life.

I will dedicate this event to my mum's memory and to the many many patients that come through the doors of our Trust every single day." says Karl.

It's thanks to your donations that we can support cutting-edge studies at The Clatterbridge Cancer Centre, ranging from research, innovative new technology and much more.

Your support makes such a difference to the lives of local people with cancer and the future of cancer care for millions of people around the world.

To find out more about how your donations help visit:

cclatterbridgecharity.org/our-impact



Get Connected!

Whether you're a regular fitness fanatic or braving your very first marathon, learn how to connect your Strava account to your JustGiving page and get ready to get active!

1. Download the **STRAVA** app and register for an account (if you haven't already).
2. Log in to your JustGiving page, scroll down your Fundraising Page & click on the 'Connect Strava' button.
3. Confirm the Strava permissions and select your fitness settings/preferences.
4. When you sync your phone or fitness device with Strava, your fitness activities will show automatically on your connected JustGiving page!



It's time to Step on It!

Perfect for those taking on a walking challenge, or a step challenge you can now automatically update your supporters with your training and event progress simply by connecting your Fitbit to your JustGiving page.

Want to learn how? [Click here](#) to find out more, and let's walk against cancer together!



Make a difference while you shop online!

easyfundraising partners with over 7,000 brands, such as Argos, JD Sports, John Lewis or Amazon, and each of these brands will donate a part of what you spend to Clatterbridge Cancer Charity.

AND, it won't cost you any extra!

Visit easyfundraising.org.uk/causes/clatterbridgecharity to turn your daily shopping into donations!

Turn your daily shopping into donations!



Sign up today with



Fundraising FAQs

Read our top tips on how to become a high-flying fundraiser in time for your event!

How do I get my cash donations to you?

Charity Law restricts us from taking cash on the day of your event, but there are a couple of ways of making sure your donations get to the Charity safely:

- Request a [Paying-in Slip](#) from the Charity and take your donations to your local Natwest branch and they will be paid directly to the Charity.
- Pay in your donations [online](#) using the our website, and remember to let us know what event you completed

Can I give you my Sponsor Forms?

Of course! We ask that you please post your Sponsor Forms to:

The Clatterbridge Cancer Centre, Charity Office - Wirral, Clatterbridge Road, Bebington, Wirral, CH63 4JY.

Make sure you put your full name and address on your Sponsor Forms so that we can match them up with your fundraising and so that we can claim Gift Aid on your donations.

How do I set up a JustGiving page?

Visit justgiving.com/clatterbridgecc and click on 'Fundraise for Us'. Then follow the instructions listed in your Fundraising Guide.

Give your money a boost!

Want to take your fundraising one step further? Take a look at some of our fantastic fundraising ideas to really boost your donations!

Donate your commute to work

Donate the money you would otherwise spend on your commute to work to Clatterbridge Cancer Charity and help us support the 1 in 2 who need us now.

Whether you do this for a week, a month or longer is up to you, but with the world embracing a more flexible working pattern its a win-win for everyone!

Pub Quiz

We love a good quiz - especially when we come out on top! Why not host your own Pub Quiz at your local, and get all of your community involved.

Why not host your Pub Quiz online using Zoom, and this way you can have fun and raise money for the Charity from the comfort of your own home!

Coffee Morning

Channel your inner Paul Hollywood and challenge everyone to a Bake Off; award Star Baker to the one who makes the best meringues, give out a prize for the one who raises the most dough and let's not forget a consolation prize for the soggy bottoms too!

Facebook Fundraising

Whether you're celebrating a special birthday, an anniversary or just want to boost your donations creating a Facebook fundraiser is simple and effective way of adding to your overall total.

To set up your own Facebook fundraiser, visit facebook.com/help.

Walk Against Cancer

Whether you join us at our Glow Green: Night Walk, or you take on a trek of your own this is a simple and fun fundraiser which anyone can do.

Why not challenge yourself and walk 10,000 steps in your local area, or go one step further and take on one of the [Ultra Challenge](#) events?

Stream On and Team Up!

Did you know that you can host a Streaming Marathon or a Streaming Event in aid of Clatterbridge Cancer Charity?

Whether you're a gamer, or you enjoy hosting virtual movie nights with your family and friends Streaming has become a huge part of our lives.

Get in touch with our Charity Team to find out how you can get involved and streamline your donations to make a difference to cancer patients.



Partner your business with Clatterbridge

Partnering your business with us has so many benefits, and there are lots of ways your business can help make a difference.

Charity of the Year

Nominate Clatterbridge to be your chosen Charity of the Year within your workplace! Work in partnership with us for 12 months or more and we will help and support your team in raising as much as possible for cancer patients across our region.

We are able to provide as much help as you may need to help you reach or even exceed your targets!

Sponsorship

The success of our events relies on the generosity of our sponsors. There are so many advantages to your business becoming one of our event sponsors and there are so many perks from advertising to team building for your organisation.

We have a range of opportunities throughout the year, which can be tailored to your requirements and a wide portfolio of events to sponsor; ranging from gala dinners to challenge events there's something for everyone.

Payroll Giving

Payroll giving is easily set up through your payroll or finance teams and can be sent directly to us here at Clatterbridge. By encouraging your employees to give a discretionary donation through their pay each month, small donations will soon roll into big donations that can really help make a difference.

Matched Funding

Matched Funding is such a good way to boost your fundraising target and motivate your employees. Some businesses offer to match your fundraising on a pound-by-pound basis, while others will specify a limit in which they will match. Whichever option you choose, this is a great way to increase your donation!

For more information on any of the above, or to register your interest in becoming a partner of Clatterbridge Cancer Charity, please speak with our Corporate Partnerships Manager; Danielle Carney

danielle.carney@nhs.net / 0151 556 5353



Gifts in Wills

Together, we can make a difference for future generations

Leaving a gift in your Will is a big decision, but it can be one that makes a very special and lasting difference to the lives of people with cancer, long into the future.

Once you've looked after your loved ones in your Will, leaving a gift to Clatterbridge Cancer Charity helps support the amazing work at The Clatterbridge Cancer Centre and change the lives of countless cancer patients each year.

With one in two people now affected by cancer, the need for earlier diagnosis and more effective treatments for our patients goes on. Never has it been so important for Clatterbridge to continue its mission, to drive improved outcomes and experience through its unique network of specialist cancer care across Cheshire and Merseyside.

This is why we need your support more than ever. Your gift will help make a real difference to the future of cancer care.

Gifts in Wills generously left to us by our supporters, account for a third of our charitable income. These special gifts help us to achieve so much for local people with cancer, which may not have been possible through NHS funding alone.

Thanks to our Charity supporters, we continue to be there for everyone who needs us, raising money to support patients and research at The Clatterbridge Cancer Centre. We ensure our colleagues can provide the best care and develop life-saving treatments, fund the latest equipment and technology and create the best possible patient environments.

For further information please contact our Gift in Wills team on ccf-tr.giftsinwills@nhs.net or by calling 0151 556 5566.

John & Nikki's Gift

"John was diagnosed with non-Hodgkin's lymphoma 24 years ago, due to advanced treatments at the time he survived this particular cancer. We were so grateful that John has "come out the other end" of this dreadful disease.

To enable advancements in cancer treatment and care, we are leaving a gift in our Will to our local charity, Clatterbridge Cancer Charity in order to increase knowledge in developing treatment for all types of cancer, which will hopefully help to cure this disease."

- John and Nikki Best





On your mark, get set, go!

Sign up, show up, and run your heart out for Team Clatterbridge

There are still plenty of races to sign up for and show your support in 2024. From Inflatable 5k's to full length Marathons, there is something for everyone!

So whether you're a seasoned runner or just looking for a fun way to get active, we would love to see you giving them a go! Grab your friends, put on those running shoes, and join us for days filled with energy, excitement, and making strides towards a great cause.

Please get in touch with our Events Team on 0151 556 5566 or by visiting clatterbridgecharity.org/events/ today!

Keep it legal

Here is everything you need to know to make sure your fundraising is fun, safe and legal!

Staying Safe whilst Fundraising

The health and safety of our supporters is paramount, and we want you and everyone involved to be safe as you plan your fundraising event(s). Please make sure you refer to the latest Government guidelines when it comes to organising your fundraising activities.

Permissions

If you are hosting an event in a public area, You will need to obtain permission from the local authorities or the property owner.

Photography and Videography

Please make sure you make your attendees aware that photos and videos will be taken throughout the duration of your event, and let them know how and where they will be used.

First Aid

If your event involves a large group of people, make sure that you have appropriate First Aid support in case of an emergency. You can get First Aid advice from both St John's Ambulance and the British Red Cross. As a reference guide, if your event has more than 500 people attending there should be a minimum of two qualified First Aiders in attendance at your event.

Insurance

If your event involves the general public, you will need to make sure you have Public Liability Insurance in place.

Double check with if your venue already has Public Liability Insurance, but if you're hosting your event at home or on a private property, check your Public Liability Insurance covers this too.

Fundraising with Food

Keep your supporters and attendees safe, and check with the Food Standards Agency guidelines on preparing, handling, cooking and storing food.

Public Collections, Lotteries and Raffles

Planning a public collection, a lottery or a raffle? Speak to your local council, as you may need to obtain a license first.

You can also check on the Gambling Commission website to see whether you will need a license, and what type of license you'll need for your lottery or raffle

Date Protection

Only collect information you need, only keep it for as long as you need it and do not share it with others.

Gift Aid

The Gift Aid scheme is for gifts of money to charities by individuals who pay UK tax.

Charities can reclaim tax on any donations made by individuals, whether large or small, regular or one-off, which means a donation of £10 under Gift Aid is worth £12.50 to the Charity!

Gift aid donations are regarded as having (20%) basic rate tax deducted by the donor, which means charities can then reclaim the basic rate tax from HM Revenue & Customs (HMRC).

However, if we have paid for your place in one of our events then donations made by you, your spouse or partner, or your relatives and their spouses or partners will not be eligible for Gift Aid.



I've skydived for

Closing your Fundraising Page

Now you've finished your fundraising, it's time to say thank you to your supporters and time to close your page.

Follow these simple steps and learn how to close your Fundraising Page.

1. Log in to your JustGiving account, and on your Fundraising Page click on the "edit" option.
2. Click on "Settings" at the top of the page.
3. Choose a date to close your page, and click on "Save Date".
4. Your JustGiving page will then close automatically on your chosen date. Please note that all funds that are raised on a JustGiving page automatically make their way to us at Clatterbridge Cancer Charity so you don't need to do anything.
5. Let us know when you've completed your fundraising, and we'll send your Certificate and Medal to say thank you for all of your support!

If you'd like to continue to support Clatterbridge Cancer Charity after your fundraising activity has finished, we'd love to have you with us. From supporting at events to volunteering in our office or out in the community, there are great opportunities to have fun and make a difference.

0151 556 5566

Charity Office
The Clatterbridge Cancer Centre
Clatterbridge Road , Wirral
CH63 4JY

clatterbridgecharity.org
ccf-tr.fundraising@nhs.net



Clatterbridge
Cancer Charity



Registered with
**FUNDRAISING
REGULATOR**